



**19/32 Stephen Road BOTANY NSW**

2 🛏 2 🚿 2 🚗

Looking for an apartment on one level bigger than most homes? Then Christmas has come early. With a peaceful leafy set-back position, a large flowing indoor and outdoor layout and an oversized double lock-up garage this premium 'East Central' apartment is the one you have been waiting for.

**Price** : \$ 980,000

**View** : <https://www.coastlineagency.com/7301464>

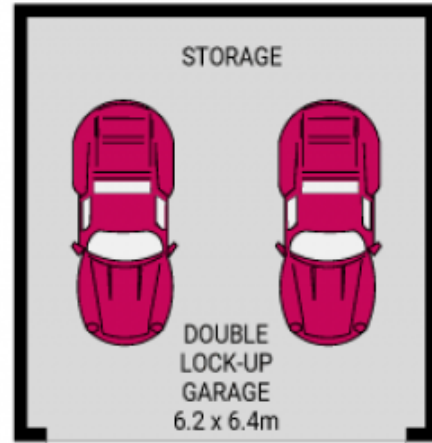
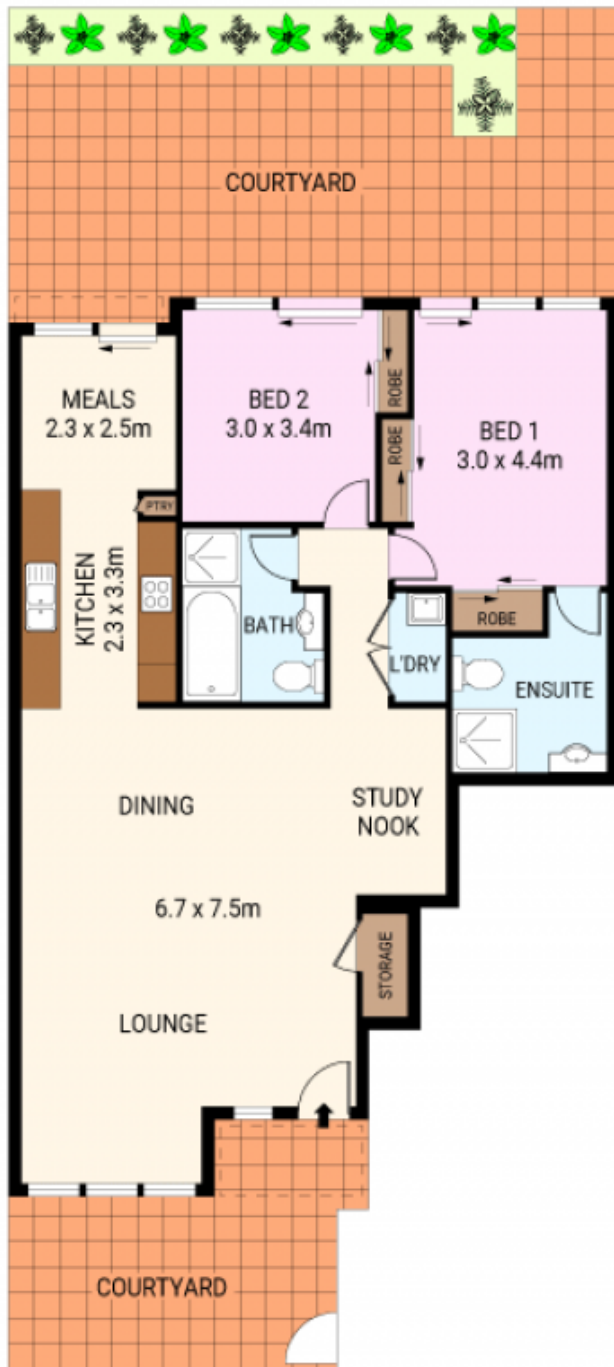
- Every single room opens to an outdoor area
- Two courtyards, larger at rear with elevated landscaping
- Gas fitted CaesarStone kitchen with Omega appliances
- Central heating/cooling, built-ins in both bedrooms
- Well appointed master ensuite and full main bathroom
- Enormous double lock-up garage with plentiful storage
- Unique investment opportunity, ideal for astute downsizers
- Close to schools, cafes, and Westfield Eastgardens



**Richard Movsessian**  
0293498000



**Jamie Van Le**  
0293498000



PLANS SHOWN ONLY INDICATIVE OF LAYOUT. DIMENSIONS ARE APPROXIMATE.  
Floor plans by [www.remaustralia.com](http://www.remaustralia.com)  
Ref. No. 15535



02 9349 8000

19/32 STEPHEN ROAD

BOTANY